

M/Y AMAN

YACHT FOR CHARTER

SANLORENZO SL96'
2016
ITALIAN Flag

AMAN, a 29.1m Sanlorenzo crafted in 2016, offers a seamless blend of elegance and technology. With a sleek monohull and anchor stabilizers, AMAN ensures a luxurious and smooth sailing experience. This beautifully-maintained vessel combines modern design with advanced features for those seeking both style and comfort at sea

AMAN, based in Italy, in Poltu Quatu in Sardinia in summer, invites you to embark on an enchanting sailing experience in the heart of the Mediterranean. Italy, famous for its timeless beauty, offers a rich tapestry of coastal wonders, historical treasures and culinary delights. With AMAN as your vessel, explore azure waters, discover secluded coves and be seduced by Italy's most iconic destinations. Whether it's the Amalfi Coast, the elegant Italian Riviera or the enchanting islands, AMAN promises an unforgettable journey through Italy's scenic splendours.



The main deck features a formal dining area, while the foredeck and spacious flybridge offer additional options for outdoor dining and sunbathing. AMAN's outdoor ambiance perfectly complements its chic and modern indoor living spaces, including inviting living and dining rooms that enhance the overall yachting experience.



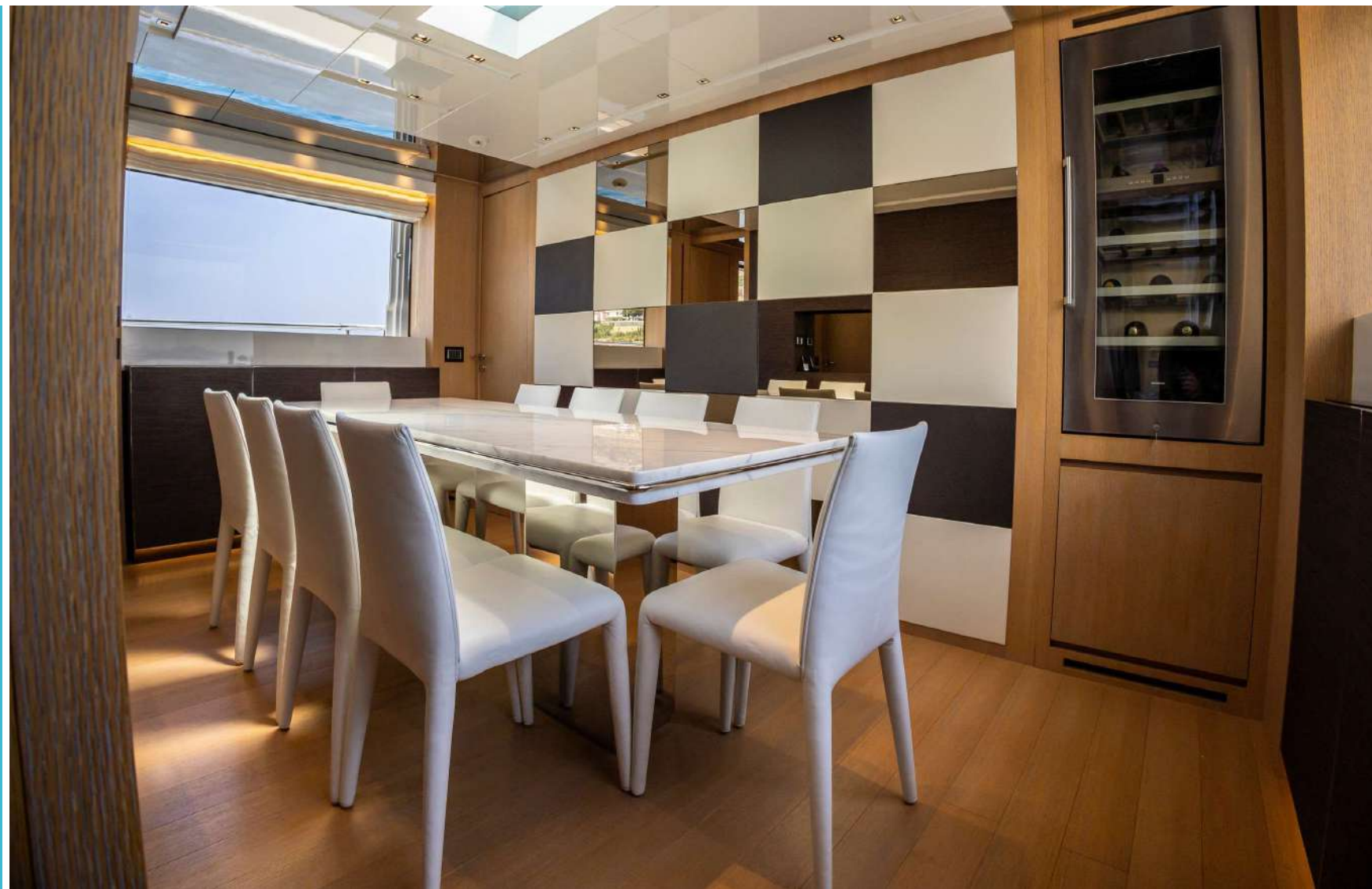
The outdoor spaces of AMAN are a true testament to luxury living. With 3 beautifully designed solariums, guests can indulge in the Mediterranean sun and scenery



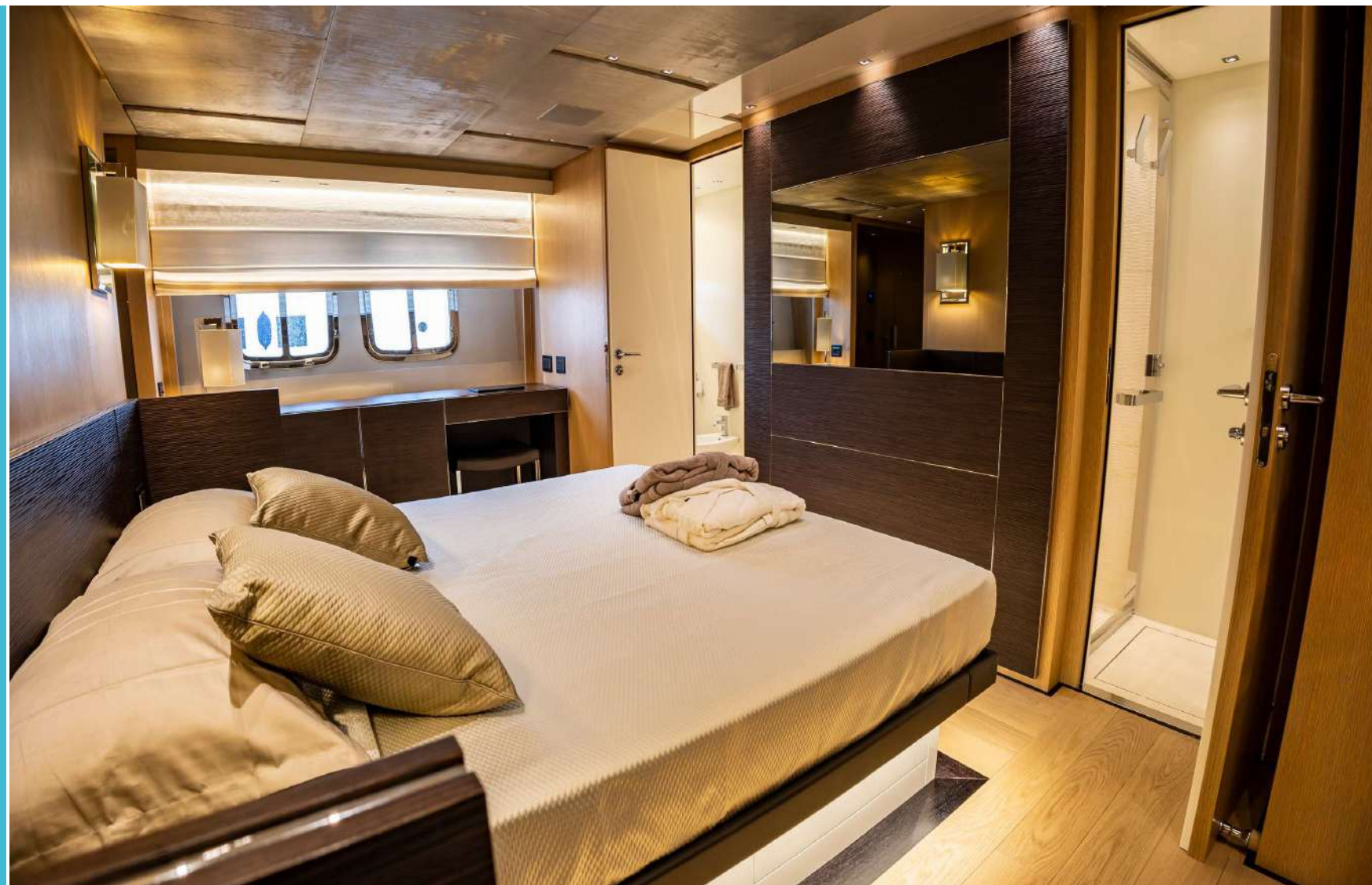
The interior of the AMAN is designed to accommodate up to 9 guests in 4 carefully appointed staterooms. There is a Master Suite and a VIP stateroom, plus a twin cabin with an additional pullman and a double cabin. Each stateroom is meticulously decorated, ensuring a harmonious blend of modernity and elegance.



Elegant and seductive, the Sanlorenzo SL96 dazzles you from the moment you look at her. A clean and dynamic profile features striking, sharp angles for a powerful and bold look.



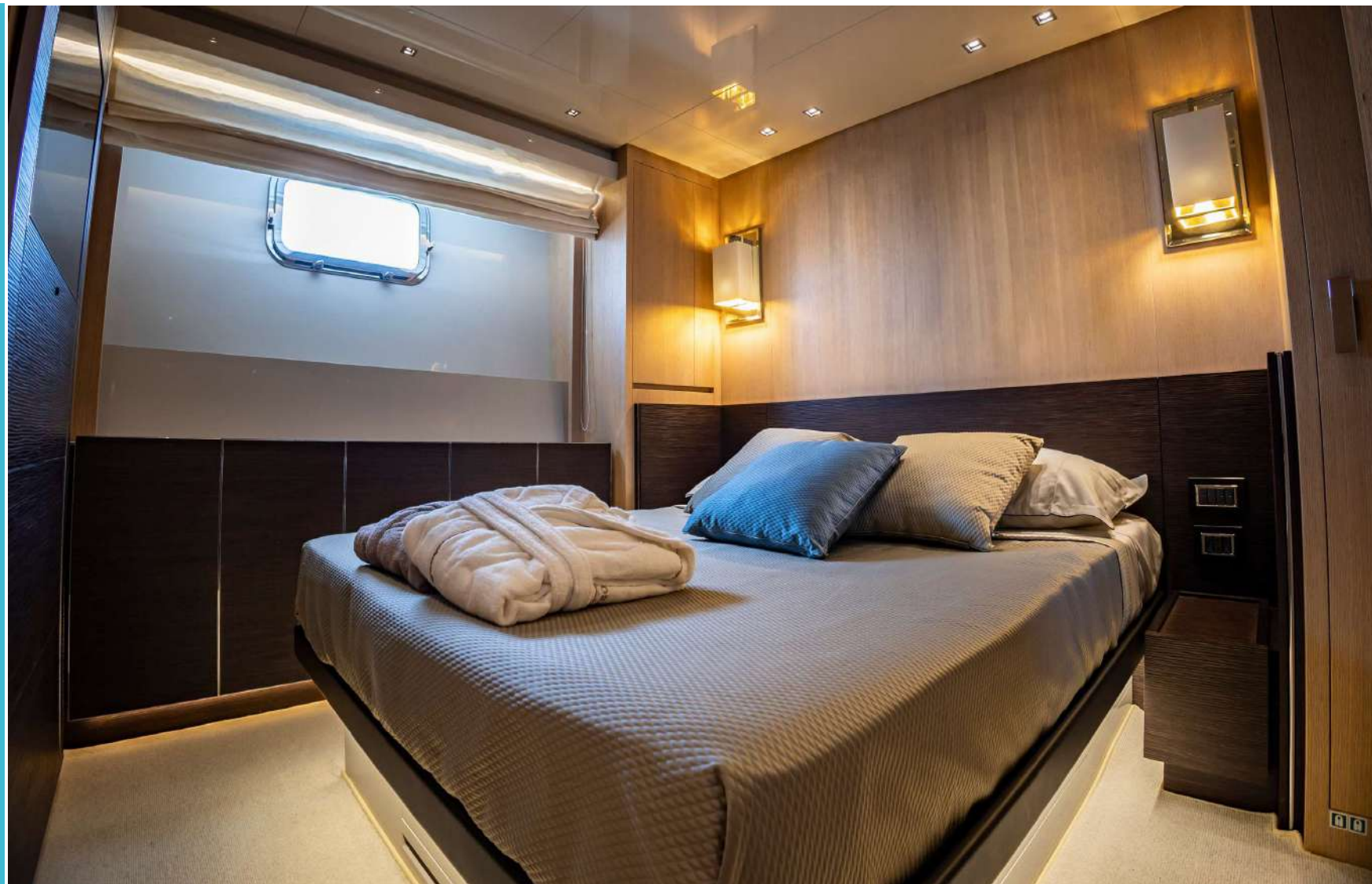
Master cabin



Bathroom details



VIP Cabin



Tenders and Toys:

2 Seabobs,
paddle surf,
tender,
Inflatable pool.



Technical Specs

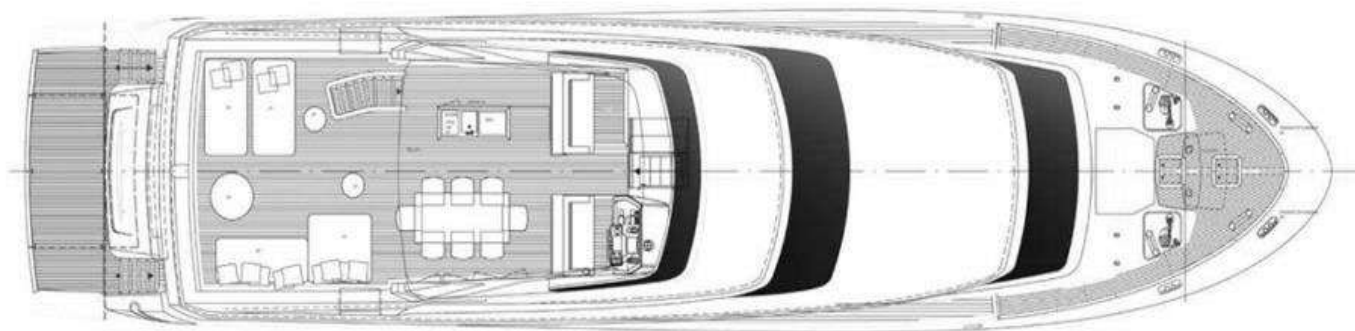
AMAN Specifications

Type:	Motor Yacht
Builder:	SANLORENZO YACHTS SPA
Model:	SL96
Year:	2016
Hull:	Planning
Refit:	-
L.O.A.:	29.06 mt
Beam:	6.80 mt
Draft:	1.93 mt
Classification:	CE "A" category
Gross Tonnage:	110 grt
Crew:	4
Guests:	9
Cabins:	2 Double Cabins, 2 Twin Cabins Bed Configuration: 2 Queen Beds, 4 Single Beds, 1 Pullman Bed
Engines Make:	MTU
Engines:	2 x 2216 hp
Model:	16V2000 M84 L
Consumption:	550 l/h
Cruise Speed:	24 knots
Max Speed:	28 knots
Exterior Designer:	OFFICINA ITALIANA DESIGN
Interior Designer:	ZUCCON
Passengers capacity:	12 px cruiser 8 px cruiser day

Layout



Flying bridge



Main deck

Price list

- Charter rates – Retail price list :

	Weekly rate	Daily rate
• June	€ 65.000,00	TBC
• July	€ 70.000,00	TBC
• August	€ 70.000,00	TBC

- **Our offer includes:**

- taxes, crew (4 people) , mooring, insurance cat. A (full insurance), licenses, transfer from the villa to the harbour and back – soft drinks –
- weekly rate : two free daily lunch for six people

- **Not included:**

- Italian Vat (22%),fuel, galley, mooring taxes in different harbor of our base

Reservation terms

- Security deposit: yes
- In advance, at reservation 50 %
- To settle 30 days before emb. 50 %
- Possibility One Way: yes

Contact

SANLORENZO

- **Spice Yacht srl**

- **Mobile:** +39 348 0549109

- **Phone:** +39 0187 765602

Reg.Office : Piazza Caduti Per La Liberta'N.30, 19124 La Spezia

HQ : Via Giacomo Doria N.74, 19124 La Spezia

Web: www.spiceyacht.com | **Mail:** info@spiceyacht.com